

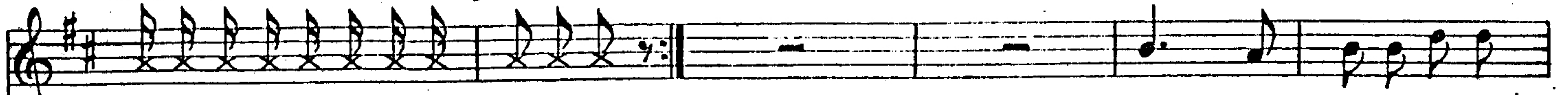
El Chinito. (Chong Ki Fu)

Piano introduction in 2/4 time, key of D major. The right hand features a rhythmic pattern of eighth notes and chords, while the left hand plays a steady bass line of eighth notes.

Vocal line and piano accompaniment. The vocal line is in the treble clef, and the piano accompaniment is in the grand staff. The lyrics are in Spanish.

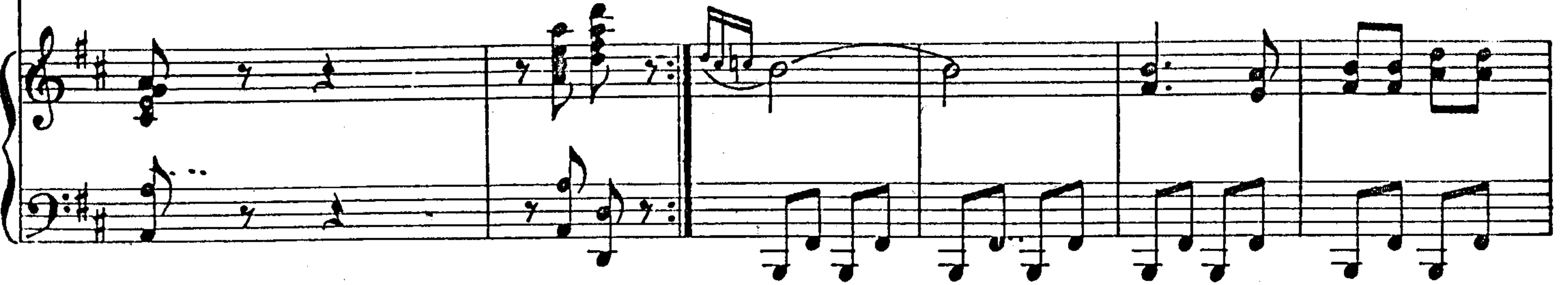
Un chi_ni_to es_tam.pa.do en un gran ja_pón fué a cu_sa.do de de_cir:
El chi_ni_to fué lle_va.do an.te un man.da_rín ya lle_gar.le di_joa_sí:

hablado



YANTSE A MO OU-A TING I PONG CHONG KI

El chi ni to no que-



ni a ya vi viv en el ja prón-----

Pues es-



ta ba di bu ja do en las ga pas de un dra gón-----

El chi ni to fué obli ga do



a vol ver a lí

pe ro an tes di joa sí

Yan tse a mo ou-a ting i Pong chong ki.

